

Ordnance Survey Ireland Licence No EN 0003718  
© Ordnance Survey Ireland/Government of Ireland

IRISH WATER WATERMAIN DETAILS	
Drawing No.	Drawing Title
STD-W-01	Water service connection responsibility
STD-W-02	Typical layout for water mains within developments
STD-W-03	Customer connection & boundary box
STD-W-04	General pipe connections (sheet 1 of 7)
STD-W-05	General pipe connections (sheet 2 of 7)
STD-W-06	General pipe connections (sheet 3 of 7)
STD-W-07	General pipe connections (sheet 4 of 7)
STD-W-08	General pipe connections (sheet 5 of 7)
STD-W-09	General pipe connections (sheet 6 of 7)
STD-W-11	Typical service layout indicating separation distances
STD-W-12	Restrictions on water infrastructure works adjacent to existing trees
STD-W-12A	Restrictions on new trees / shrubs planting adjacent to watermains
STD-W-13	Trench backfill & bedding
STD-W-15	Sluice valve for polyethylene (P.E.) pipe (>350mm dia.) (sheet 2 of 2)
STD-W-18	On-line hydrant for polyethylene (P.E.) pipe (sheet 3 of 4)
STD-W-19	Off-line hydrant for polyethylene (P.E.) pipe (sheet 4 of 4)
STD-W-22	On-line air valve for polyethylene (P.E.) pipe (sheet 3 of 4)
STD-W-26	Non mech meter chamber (40-250mm dia.)
STD-W-27	Marker posts / plates
STD-W-28	Water main thrust & support blocks
STD-W-30	Scour chamber & head wall arrangements

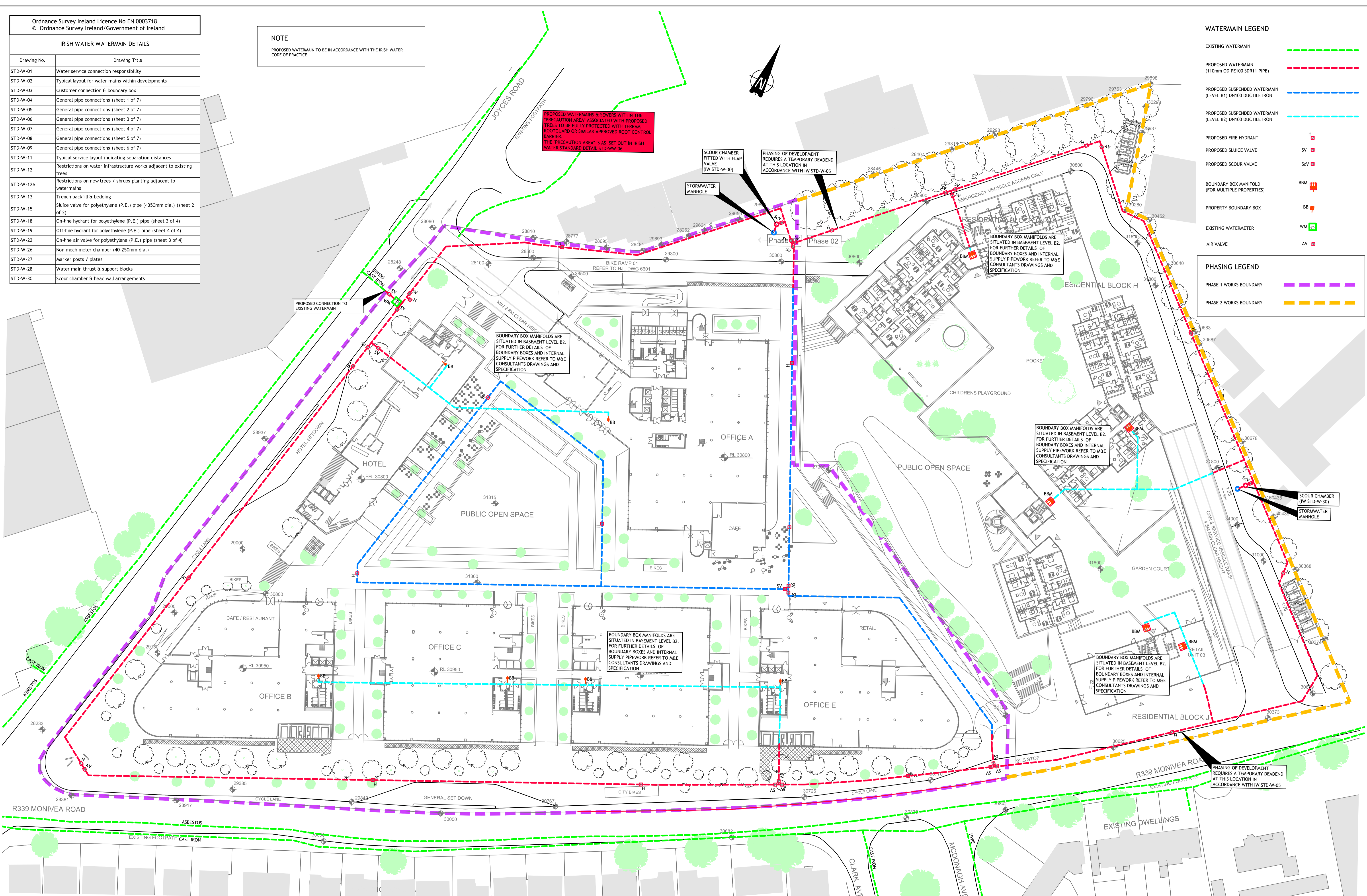
**NOTE**  
PROPOSED WATERMAIN TO BE IN ACCORDANCE WITH THE IRISH WATER CODE OF PRACTICE

**WATERMAIN LEGEND**

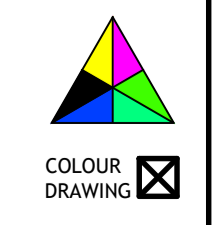
- EXISTING WATERMAIN
- PROPOSED WATERMAIN (110mm OD PE100 SDR11 PIPE)
- PROPOSED SUSPENDED WATERMAIN (LEVEL B1) DN100 DUCTILE IRON
- PROPOSED SUSPENDED WATERMAIN (LEVEL B2) DN100 DUCTILE IRON
- PROPOSED FIRE HYDRANT
- PROPOSED SLUICE VALVE
- PROPOSED SCOUR VALVE
- BOUNDARY BOX MANIFOLD (FOR MULTIPLE PROPERTIES)
- PROPERTY BOUNDARY BOX
- EXISTING WATERMETER
- AIR VALVE

**PHASING LEGEND**

- PHASE 1 WORKS BOUNDARY
- PHASE 2 WORKS BOUNDARY



© PUNCH Consulting Engineers  
This drawing and any design hereon is the copyright of the Consultants and must not be reproduced without their written consent.  
All drawings remain the property of the Consultants.  
Figured dimension only to be taken from this drawing.  
Consultants to be informed immediately of any discrepancies before work proceeds.



Date Drawn: 2019-03-08  
Drawn By: P.J. Mulcahy  
Date Issued: 2019-03-13  
Issued By: P.J. Mulcahy



Rev	Amendment	By	Date
PL0	ISSUED FOR PLANNING	PJM	2019-03-13
PL1	ISSUED FOR RFI - REVISED AS PER IRISH WATER COMMENTS	PJM	2019-05-15

Client:  
CROWN SQUARE DEVELOPMENTS LTD.

Job: CROWN SQUARE PROJECT GALWAY  
Title: WATERMAIN LAYOUT - PHASE 2

**PUNCH** consulting engineers  
Dublin | Limerick | Cork | Galway | Glasgow  
Carleycon House, Main Street, Oranmore, Co. Galway H91 DX4  
IRL: +353 91 388 016 www.punchconsulting.com

Stage: PLANNING  
Scale @ A1: 1:500  
Technician Check: P.J. Mulcahy  
Engineer Check: Fergal Timlin  
Approved: Donal Gallery  
Drawing No: 183-106-054  
Rev: PL1